

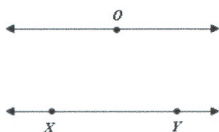
Name \_\_\_\_\_

Period \_\_\_\_\_

①

~~3.2~~  
 3.1

②

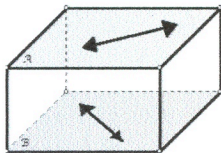
**Parallel lines**

- Lines that are coplanar and do not intersect

What is the symbol for parallel lines?

How do you mark a drawing to show two lines are parallel?

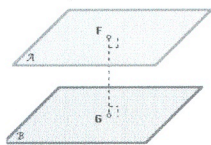
③

**Skew lines**

- Lines that do not intersect and are not coplanar

4.

### Parallel planes



- Two planes that do not intersect

---

---

---

---

---

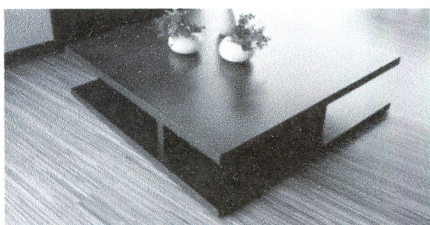
---

---

---

5.

### Parallel planes




---

---

---

---

---

---

---

---

6.

### Transversal



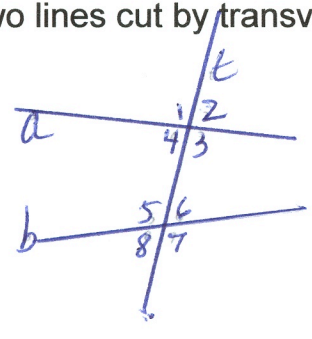
- Line that intersects two or more coplanar lines at different points

Mark lines  $a$  &  $b$  to show they are parallel

Write "line  $a$  is parallel to line  $b$ " using symbols

7.

Two lines cut by transversal




---

---

---

---

---

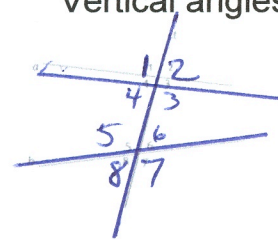
---

---

---

8.

Vertical angles



- Angles opposite each other at the intersection of two lines

Name 4 pairs of vertical angles

1. \_\_\_\_\_

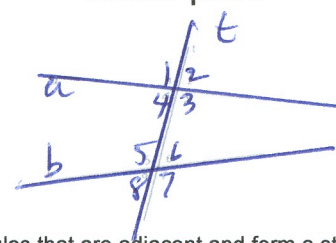
2. \_\_\_\_\_

3. \_\_\_\_\_

4. \_\_\_\_\_

9.

Linear pairs



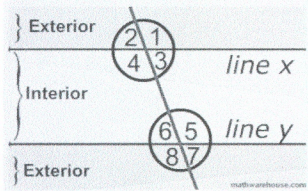
- Angles that are adjacent and form a straight line

Name 8 linear pairs

1	_____	5
2	_____	6
3	_____	7
4	_____	8

10.

### Interior/Exterior angles



- Interior angles are inside the two parallel lines
- Exterior angles are outside the two // lines

Name the 4 interior angles

\_\_\_\_\_

\_\_\_\_\_

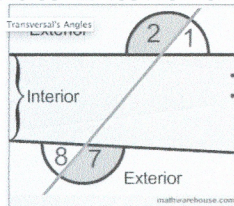
Name the 4 exterior angles

\_\_\_\_\_

\_\_\_\_\_

11.

### Alternate Exterior angles



- Two angles that lie outside the two lines and on opposite sides of the transversal

Name two pairs of  
alternate exterior angles

\_\_\_\_\_

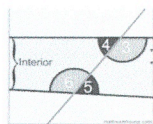
\_\_\_\_\_

\_\_\_\_\_

\_\_\_\_\_

12.

### Alternate interior angles



- Two angles that lie between the two lines and on opposite sides of the transversal

Name two pair of  
alternate interior angles

\_\_\_\_\_

\_\_\_\_\_

\_\_\_\_\_

\_\_\_\_\_

13.

### Corresponding angles

• Two angles that occupy corresponding positions

Name 4 pairs of  
corresponding angles

---



---



---



---



---

14.

### Same side interior/Consecutive

• Two angles are consecutive if they lie between two lines on the same side of the transversal

Name two pair of  
same side interior angles

---



---



---



---



---

15.

### Parallel Postulate

If there is a line and a point not on the line, then there is exactly one line through the point parallel to the given line.

There is exactly one line through P parallel to l.

---



---



---



---



---



---



16.

### Perpendicular Postulate

If there is a line and a point not on the line, then there is exactly one line through the point perpendicular to the given line.



There is exactly one line through  $P$  perpendicular to  $l$ .

What is the symbol for  
perpendicular lines?

Write "line  $l$  is perpendicular  
to line  $m$ " in symbols.